



Granite, Marble & Concrete

Granite & Marble

A mixture of binders and granite or marble aggregates, accurately washed and controlled, with good technical and structural performances. Aggregates materials are accurately selected and proposed in different versions (granite, white marble or black marble).

KEY FEATURES OF “MARBLESTONES”

Generally, seating and horizontal surfaces are smooth, while all vertical surfaces are sandblasted or bush-hammered. Only upon request and with price surcharge, products can be fully polished.

The surfaces in reconstituted stone are treated with special coating (“Anti-deterioration”) transparent satin matt, which increases the durability and ability to resist the effects of run-off and to the appearance of mold, and the like, thereby also giving the object a natural aspect.

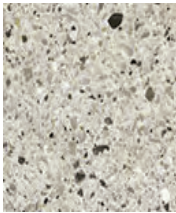



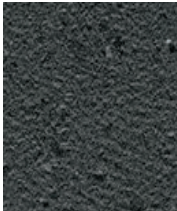

Upon request and with an extra charge, you can request “ANTIGRAFFITI”, treatment which allows easy removal of the vandalism carried out with various types of sprays and permanent markers. Generally Granite or Marble products come with bushings embedded in the stone for lifting them during the installation phase.

Maintenance

Clean the material with water and detergent, to avoid build up of dirt and weathering. For small chips of the material is possible to make the repairs with the appropriate kit to be ordered according to the type of stone finish.
In case of any doubt about the proper maintenance procedure, please contact the Metalco Quality Department for advice.

General requirements applicable to all Metalco’s products in any material

Upon receipt of the goods, where it is not possible to place and/or install them within a few days, they must always be removed from plastic (nylon) packaging to allow ventilation and prevent the formation of condensation that can irreparably damage the product. Particularly, the packaging should always be removed immediately if it is not possible to keep the goods in a covered place protected from sunlight.

	Granite	Marble	
Polished			
Sand Blasted/ Hammered			



HPC

(HIGH PERFORMANCE CONCRETE)

Mixture of reinforced performing concrete, with granite or marble aggregates, with a good technical and structural performance. Aggregates are accurately selected and offered in different versions (granite, white marble).

Key features of HPC products

Possible surface finishes of HPC products are:

- **VELLUTO SURFACE AND SIDES**
- **POLISHED SURFACE AND VELLUTO SIDES**

Not all products are available in all finishes: to view finish of each item, see the product page.

The surfaces are treated with special anti-deterioration products which increase their life-span and their ability to resist the effect of run-off and the appearance of mildew and the like.

On request, and at an additional cost, an "ANTI-GRAFFITI" treatment is available which permits removing the results of vandalism carried out with different types of sprays and permanent markers.

Product of high weight are generally equipped with bushings embedded in the mixture suitable for screwing in handling and installation eyebolts

Maintenance.

Wash the material with water and mild detergent, to avoid dirt and weathering deterioration. It is possible to repair small chips with specific kits to be ordered according to the type of product.

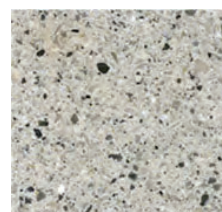
In case of any doubt about the proper maintenance procedure, please contact the Metalco Quality Department for advice.

General requirements applicable to all Metalco's products in any material

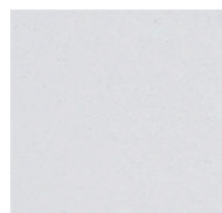
Upon receipt of the goods, where it is not possible to place and/or install them within a few days, they must always be removed from plastic (nylon) packaging to allow ventilation and prevent the formation of condensation that can irreparably damage the product. Particularly, the packaging should always be removed immediately if it is not possible to keep the goods in a covered place protected from sunlight.



HPC with granite
VELVET



HPC with granite
SMOOTH



HPC with white marble
VELVET



HPC with white marble
POLISHED



UHPC

(ULTRA HIGH PERFORMANCE CONCRETE)

Mixture made of ultra-high performance fibre reinforced concrete providing high technical and structural performance combined with extraordinary freedom of design.

Key features of UHPC products

The possible surface finishes of UHPC products are the following:

ALFA: smooth surface finish

PSI: textured surface finish

Not all products are available in all finishes:

to view the options, see the product page.

Surfaces are treated with specific products anti-degradation, which increase the products' life and resistance characteristics to rain washout and to mold and similar events.

Upon request and with an additional charge, it is possible to request "ANTIGRAFFITI" treatment.

Products of higher weight are generally equipped with bushings embedded in the mixture for mounting handling and installation eyebolts.



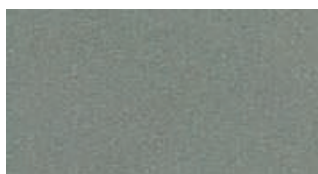
ALFA



PSI



101B



503



105Y

Maintenance.

Clean the material with water and mild detergent, to avoid build up of dirt and weathering. For small chips of the material is possible to make the repairs with the appropriate kit to be ordered according to the type of stone finish. In case of any doubt about the proper maintenance procedure, please contact the Metalco Quality Department for advice.

General requirements applicable to all Metalco's products in any material

Upon receipt of the goods, where it is not possible to place and/or install them within a few days, they must always be removed from plastic (nylon) packaging to allow ventilation and prevent the formation of condensation that can irreparably damage the product. Particularly, the packaging should always be removed immediately if it is not possible to keep the goods in a covered place protected from sunlight.