



## POWDER COATED STEEL | POWDER COATED ALUMINUM

	RAL 1012	RAL 1013	RAL 1021	RAL 1027	RAL 1028	RAL 2002
	RAL 2004	RAL 3000	RAL 3005	RAL 3012	RAL 4005	RAL 4009
RAL	RAL 5010	RAL 5013	RAL 5015	RAL 5021	RAL 5024	RAL 6018
	RAL 6019	RAL 6020	RAL 6027	RAL 7001	RAL 7008	RAL 7012
	RAL 7016	RAL 7035	RAL 7039	RAL 8017	RAL 9005	RAL 9006
	RAL 1012	RAL 1012	CORTEN COLOUR			
SABLE	200 BLACK	250 GREY	300 GREEN	MW3021 SILVER	500 GREEN MUSK	IRON GREY
	650 BROWN	700 BLUE	900 DARK	2800 TAUPE	7039 QUARTZ GREY	



## POWDER COATED STEEL | POWDER COATED ALUMINUM

For every steel product and component, we choose the most suitable raw materials and treatments based on our production cycle and the needs of each design.

Our steel treatments include hot-dip galvanisation, cold galvanising, Sendzimir galvanisation, cathaphoresis and primer coating.

For our aluminium products and components, we use aluminium in sheet or in extrusion or in casting.

Then we powder coat steel, stainless steel, and aluminium with polyester powder, in accordance with EN ISO 12944-2.

We offer a wide range of standard RAL colours with wrinkled finish with different levels of texture.

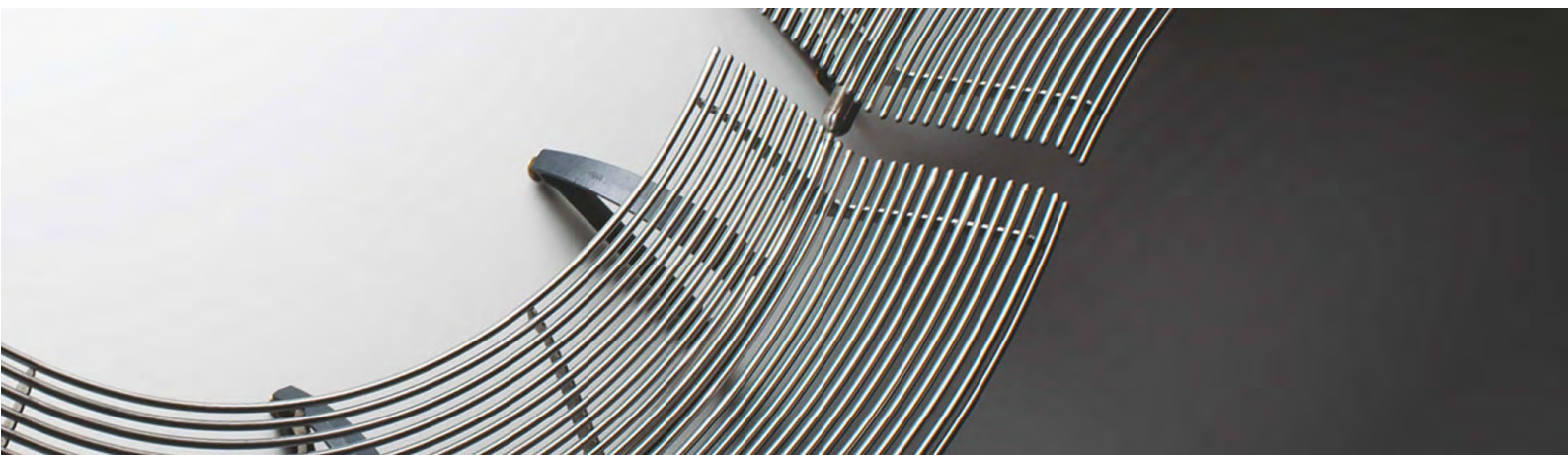
Only when customisation through stickers, pad printing or serigraphy is provided, for technical reasons, their finish will be smooth matte or smooth glossy, depending on the technical feasibility.

We also offer the exclusive 'sable' colours, with a peculiar metallic wrinkled texture.

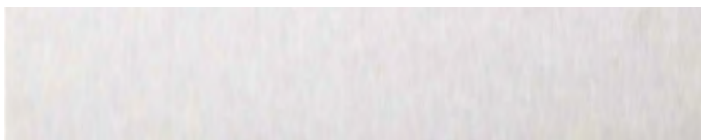
Upon request, different treatments and customisations are available, such as powder coating with non-standard RAL colours, and/or with smooth matte and smooth glossy finishes, and/or anti-graffiti treatment.

If required, the powder coating process of steel can be certified Qualisteelcoat.

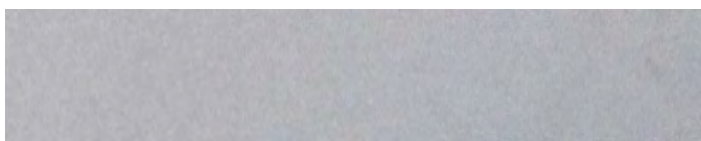




## STAINLESS STEEL



BRUSHED



SHOTBLASTED

For our stainless-steel products and components, we normally use AISI 304 or 304L stainless steel, but in case of installation in highly aggressive conditions we recommend requesting AISI 316 stainless steel.

Our stainless steel is usually brushed or shotblasted, depending on the technical features of the product.

Electropolishing treatment is also available, upon request.







## CORTEN STEEL

CORTEN STEEL

OXIDISED

CORTEN STEEL + WAX

OXIDISED PROTECTED WITH WAX

CORTEN STEEL + ANTI-WASHOUT

OXIDISED PROTECTED WITH ANTIWASHOUT

Corten steel is a “living” material, changeable over time, not uniform in appearance and each product has unique shades and colours.

We sandblast our products in Corten steel, before proceeding with the oxidation process, designed to limit water consumption.

To reduce physiological leak of oxide, upon request, wax protection treatment or anti-washout treatment are available.

In particularly saline environments, Corten steel may have a different reaction, we recommend evaluating the positioning.

