



## Tree Line Bench

The Tree Line Bench lends compelling individuality with its curved form that gives its own variations and visual interest. The bench is manufactured from a mix of granite or marble stones. It is a modular unit which can be configured to inspire social interaction which creates unique outdoor public spaces.

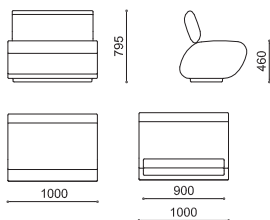
The bench is available in a variety of colours, with a sandblasted finish. The surface is treated with special transparent satin opaque varnishes. The bench is fitted with reinforced bushings for lifting and simple positioning on the ground. Equipped for surface mounting.

### Specification

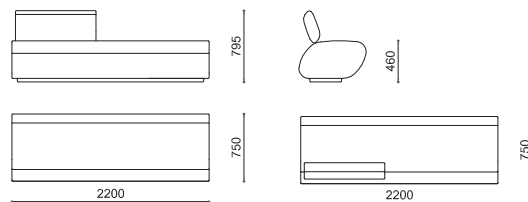
#### Materials:

Bench - reconstituted marblestone; granite

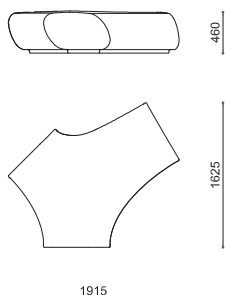
#### TREE LINE CORTO



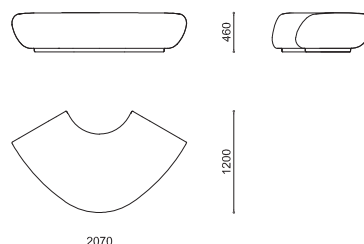
#### TREE LINE LUNGO



#### TREE LINE Y

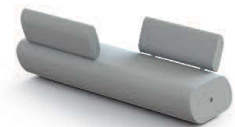


#### TREE LINE C



### Dimensions

H: 460/795mm  
W: 1000/1915/2000/2070mm  
D: 750/1200/1825mm



1470 kg



670 kg



1350 kg



1410 kg

