



## Austin Litter Bin

If you like the Austin bench, you'll love this litter bin. Shared Austin themes are reflected in the tapered conical body and ribbing of the litter bin that echo the tapered supports of the bench, and in the birds mouth lid that mirrors the relation between the bench seat and back. The ribbing frames the units side door, adding visual interest and providing functional support for the door hinges. A domed stationary lid shields contents from view and helps keep out rain and snow.

### Specification:

#### Materials:

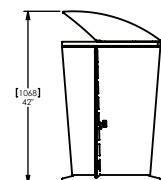
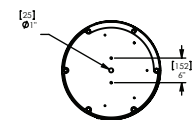
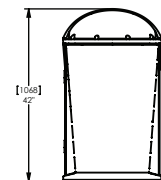
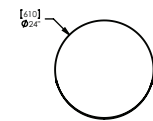
Body - powder coated steel.  
 Top - cast aluminium.  
 Base - cast iron.

#### Fixings:

Freestanding. Surface mounted.

### Dimensions

H: 890mm / 1068mm  
 Dia: 610mm  
 Capacity: 109l



(Technical Drawings for variants available on request)

